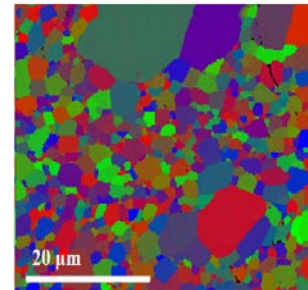
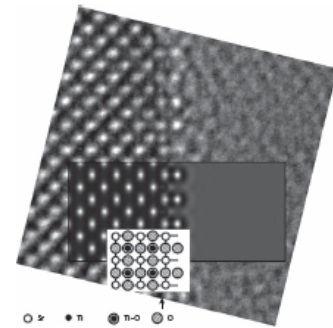




Grain Boundary Engineering

- **Grain boundary engineering**
Structural characterization of grain boundaries in SrTiO₃ by EBSD, HRTEM, and XEDS.
- **Synthesis and characterization of oxide particles**
Spray pyrolysis and spray drying
3-D geometrical characterization by electron tomography
- **Bioceramics**
- **Ceramics for energy issue**
- **Electroceramics**



Shao-Ju Shih

Professor

Vice Dean, Office of Academic Affairs
Director of Teaching and Learning Center
CTO, Executive Master of Research and Development, College of Engineering

Dept. of Materials Sci. and Eng.

Tel:+886-2-2730-3716

Shao-ju.shih@mail.ntust.edu.tw

Education:

- Dr. Phil of Materials, University of Oxford

Lectures:

- X-ray Diffraction and Crystallography
- Ceramic Sintering and Grain Boundary Engineering
- Materials Analysis
- Bioceramics

